

 **Gola**[®]
C L A S S I C S

SS22 Edit





Introducing..

Gola's undisputed heritage shines through in the new SS22 collection, reflecting the brand's timeless DNA whilst taking a modern twist, so that styles remain current and fresh like breezy summer days. We have taken inspiration from the halcyon days of the '80s with lollipop colours, jogger silhouettes of the decade and soothing soft pastels. There's unexpected colour combinations that prove striking and rich in their execution whilst metallics still glimmer in the background.

SS22 Ladies' Edit



Style shown: Daytona Chute in Off White/Pearl Pink/Lemon

Coaster Strap

Coaster Strap is easy to get along with thanks to the simple fastening and minimal design. Featuring a three-strap fastening and a stand-out iconic Gola wingflash to the side, this season ready plimsoll can be paired with anything from your wardrobe to give a distinctive vintage vibe.



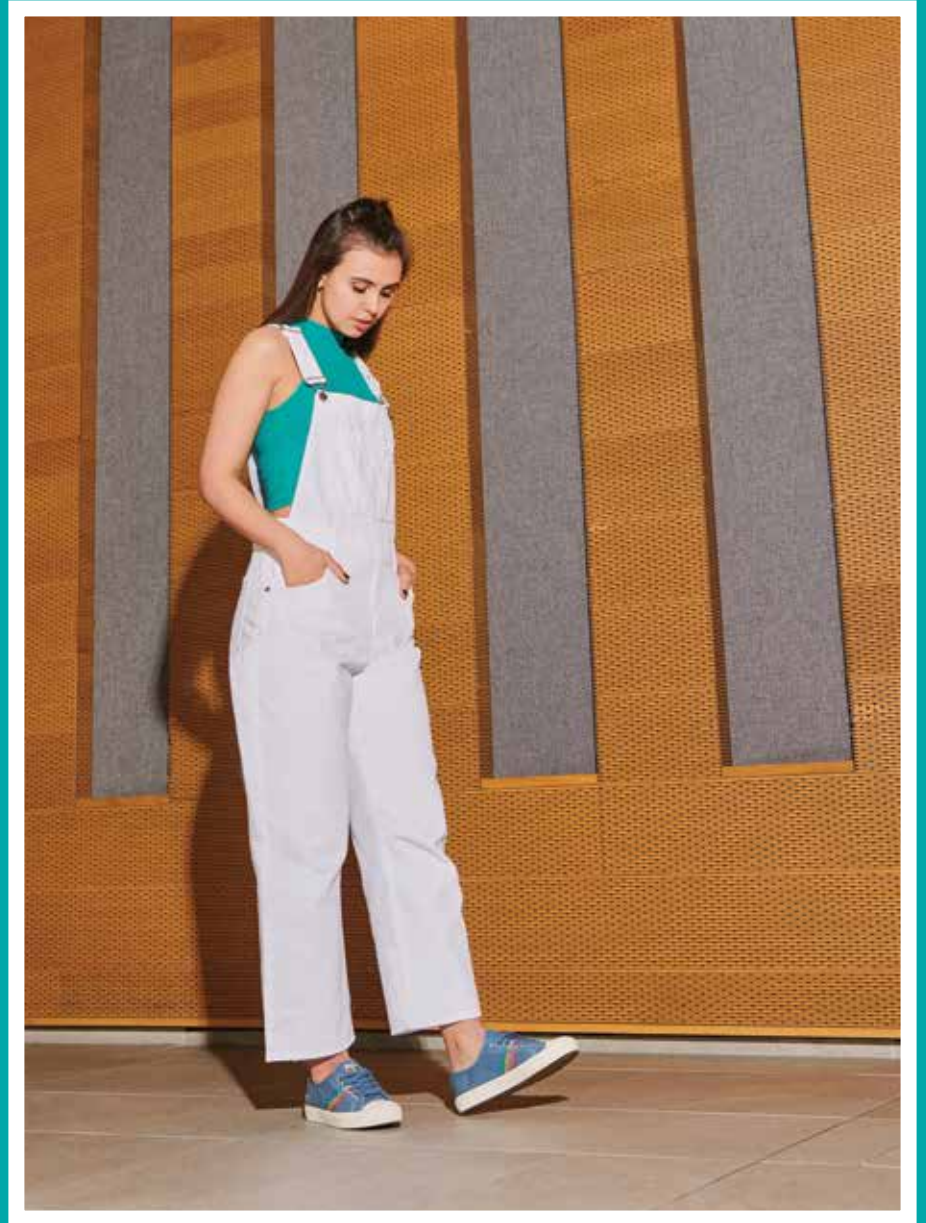
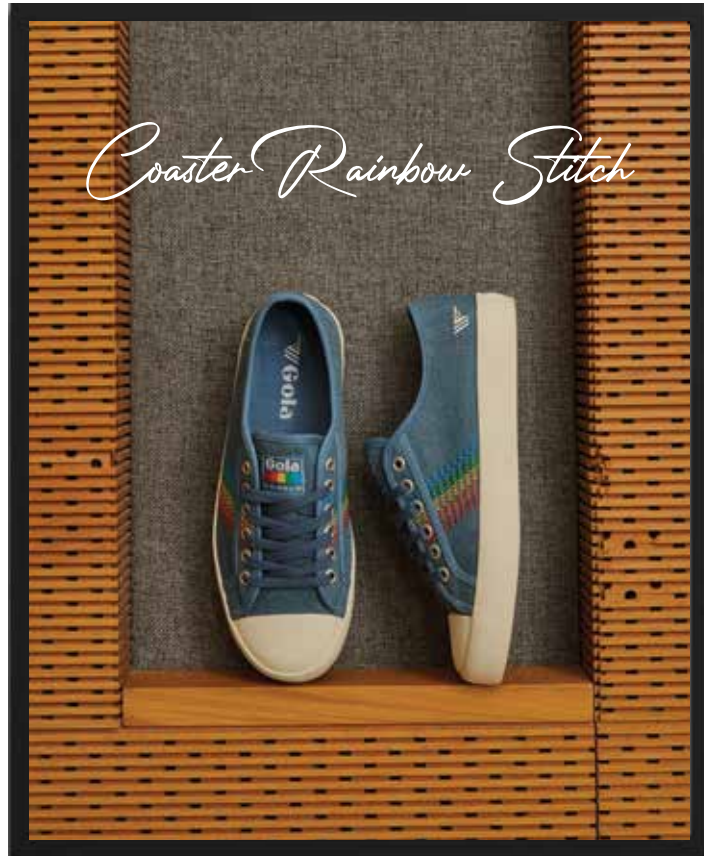


Grandslam Trident

Returning for the new season in a trend relevant colour palette, Gola Grandslam Trident puts a fresh spin on the classic street-style we all know and love. Boasting a crisp white recycled PU upper and suede colour pops, this classic court trainer is a wear anywhere, anyhow you wish choice.



The much loved Coaster Rainbow gets an update this season, taking cues from the '70s, this heritage style is finished in a denim upper with a stitched rainbow to the side, guaranteed to give your casual looks a standout finish.





Classic court trainer Dropshot comes in a number of pastel options for the season, including this blossom pink colourway. This versatile style has a modern deep cup sole and a T-shaped toe applied to the recycled PU upper, finished with a contrasting trim and heel tab. We've kept this style clean because we think it presents it at its best.



Eclipse Trident

Giving casual looks a standout finish is Eclipse Trident. Sitting on an of-the-moment, oversized sole, this low-top choice is made for slipping on under cropped denim or your comfiest joggers. Finished in a glorious crisp white recycled PU upper combined with colour pop panels of foxglove, teal and chalk pink, Eclipse Trident offers a fresh take on the maximalism trainer trend.





Eclipse Mode

Versatile, feminine and never out of style, we're roaring crazy over the Eclipse Mode. Combining textured reptile print with a colour blocked design and metallic detailing, these elevated trainers lend a wild touch to your footwear.



Enhance an off-duty look with Daytona Chute. Inspired by '90s retro jogger designs, this trainer silhouette stays true to form with its naïve upper and EVA midsole. Combining comfort and a feminine colour palette of white, pink and lemon, Daytona Chute ticks all the season's trainer boxes.



A woman with long dark hair, wearing a white sleeveless top and white trousers, is reclining on a row of red theater seats. She is wearing white sneakers with blue and pink accents. Her right leg is raised and bent at the knee, with her foot resting on the seat backrest. She is smiling and looking upwards. The theater seats are arranged in rows, and the background is a solid teal color.

Chicago

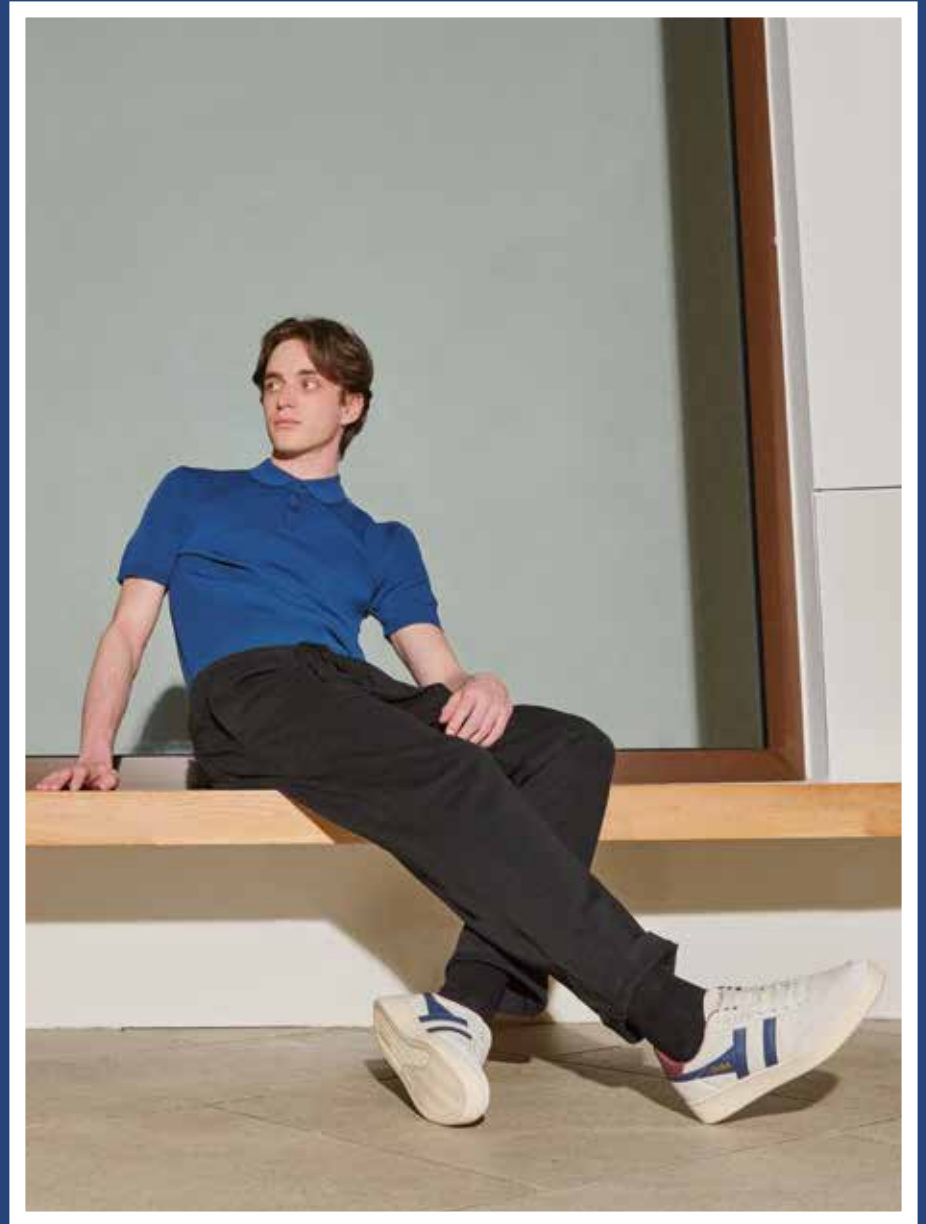
This heritage jogger is a perfect polished take on a sportswear classic; Gola Chicago is fitted with a chunky phylon midsole and a striking colour palette. Chicago has it all, a throwback style we are all raving over.

SS22 Men's Edit



Style shown: Grandslam Quadrant in White/Ash/Marine Blue/Shadow

A truly dependable footwear choice is Contact Leather. This court-sport inspired style has a timeless look and comes in a series of off white cup sole editions which are creatively combined with rich colour pops to give an authentic vibe.





Chicago

Introducing Chicago; a stellar new addition to the collection this season. This '80s inspired jogger debuts with a parachute nylon upper and a phylon midsole, offering form and function in a trend relevant silhouette guaranteed to be respected by many.





Hurricane Suede

A suede upper and zingy colour-pops combine on Hurricane Suede to give this cleated cup sole trainer an instantly recognisable dose of old-school appeal. Combining references from Gola's heritage archives yet maintaining a balanced modern look, this fresh silhouette is easy to wear and will add a bold statement to looks, without being overpowering.





Grandslam Suede

Attesting to the popularity of Grandslam Suede, the new season sees the evolution of this increasingly popular style with the introduction of new colour mixes. A trio of shades, from earthy tones to classic neutrals, are teamed with zingy colour-pops to accentuate the clean lines of this court sneaker.



Grandslam Quadrant

Clean lines and heritage undertones combine to give a unique versatility, making Grandslam Quadrant a trailblazer within the Gola collection. The new Grandslam Quadrant in leather takes all the finer features of this remarkable court trainer and further accentuates them with the creative use of colour.

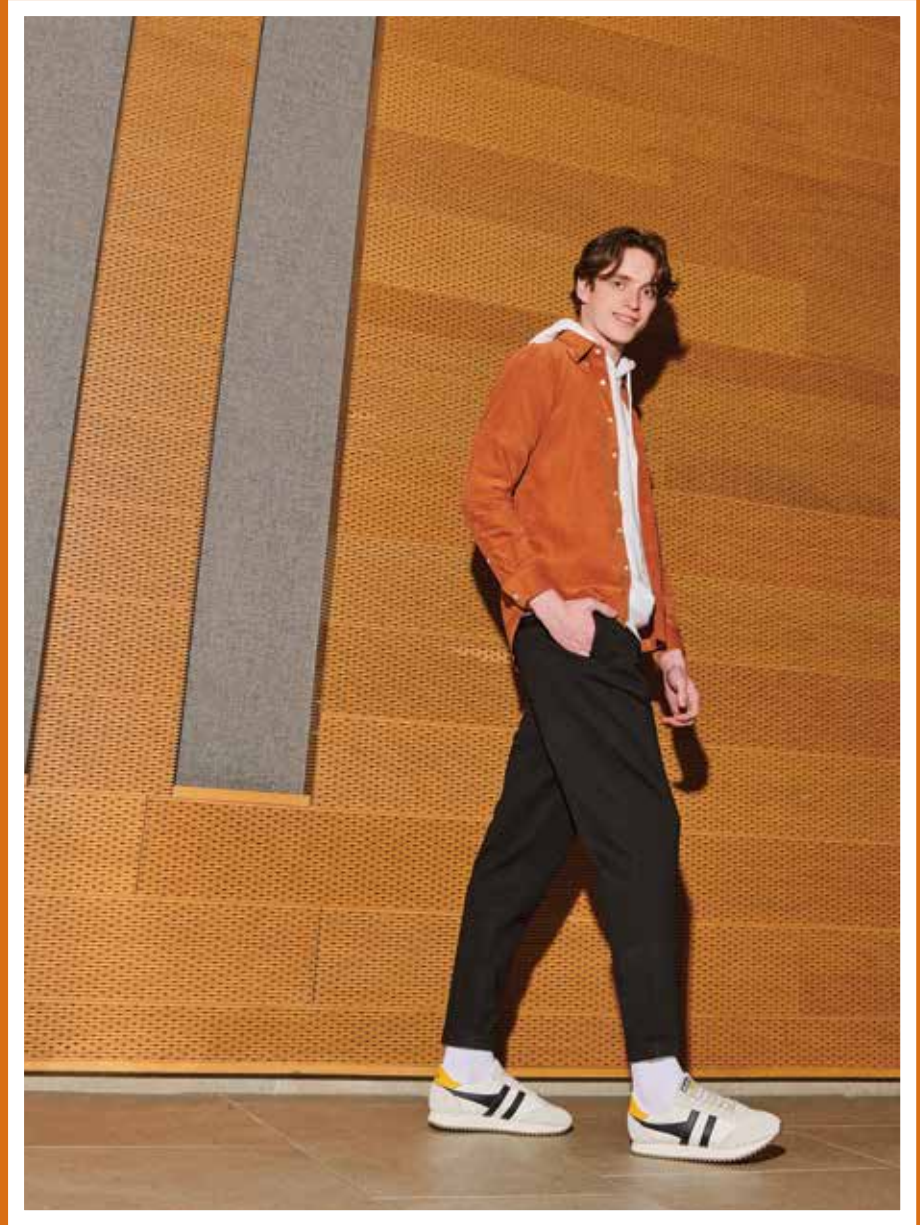


Harrier

Harrier is a cornerstone of the Gola collection, so it's no surprise that this legendary style continues to reign for SS22. Distinguished by new core shades teamed with wingflash highlights, contrast colour-pop linings have also been added to give this lace-up silhouette a subtle refresh.



Needing no introduction is Boston '78! This authentic jogger with its clean lines, heritage call-outs and a classic colour palette that takes influence from the '70s era makes it an ever-popular choice season-on-season.





Daytona

Continuing to have its moment in the fashion spotlight is the '90s jogger. Daytona is the epitome of this vintage look; mesh, nylon and suede panels in fresh colour combos combine to continue to give this style, unapologetically, an on-trend statement finish.

Micro Redford

Always a firm favourite, Gola Micro Redford is a mini version of the much coveted Redford style. Combining retro inspired design with practicality and giving a nod to the '80s, Micro Redford features a splash of colour blocking which adds vibrancy to those monochrome outfits.





Redford Strip

Retaining all the looks of the original Redford design and paying homage to Gola's football heritage, Gola Redford Strip is a classic flight bag featuring a nylon front panel which adds a sports heritage feel.

A true essential, Redford Mod is a messenger bag with inspiration taken from its namesake. This seasonal update makes a styling statement from the '60s with a symbolic colour palette and print design.





SS22 Children's Collection



REF: 04.21

 **Gola**[®]
C L A S S I C S

SS22 EDIT